



Alliant Energy Center

PERFORMANCE VENUES:

**Veterans Memorial
Coliseum &
Exhibition Hall**

FACILITY USER'S GUIDE

Venue Information

Veterans Memorial Coliseum

Building	Round, domed, arena																
Capacity	<table border="0"> <tr> <td>10,230</td> <td>General Admission</td> </tr> <tr> <td>8,844</td> <td>Reserved (unobstructed) End Stage</td> </tr> <tr> <td>9,887</td> <td>In the Round</td> </tr> <tr> <td>9,455</td> <td>Basketball</td> </tr> <tr> <td>7,890</td> <td>Hockey</td> </tr> <tr> <td>7,672</td> <td>¾ House General Admission</td> </tr> <tr> <td>5,500</td> <td>¾ House Reserved</td> </tr> <tr> <td>Varies</td> <td>With seats eliminated through use of Blackout Curtain.</td> </tr> </table>	10,230	General Admission	8,844	Reserved (unobstructed) End Stage	9,887	In the Round	9,455	Basketball	7,890	Hockey	7,672	¾ House General Admission	5,500	¾ House Reserved	Varies	With seats eliminated through use of Blackout Curtain.
10,230	General Admission																
8,844	Reserved (unobstructed) End Stage																
9,887	In the Round																
9,455	Basketball																
7,890	Hockey																
7,672	¾ House General Admission																
5,500	¾ House Reserved																
Varies	With seats eliminated through use of Blackout Curtain.																
Door Policy	<table border="0"> <tr> <td>General Admission</td> <td>1.5 Hours Prior To Performance</td> </tr> <tr> <td>Reserved Seats</td> <td>1 Hour Prior To Performance</td> </tr> </table> <p>Door policies are firm. A change requires written permission from the Director.</p>	General Admission	1.5 Hours Prior To Performance	Reserved Seats	1 Hour Prior To Performance												
General Admission	1.5 Hours Prior To Performance																
Reserved Seats	1 Hour Prior To Performance																
Load-in	Two bay loading dock with two dock levelers and covered canopy at load end. Load out approximately 50' from back of stage. Two 10' and one 14' roll-up doors. The building's second level is accessed by exterior drive-up ramp. Elevator access to the second and third floors.																
Rigging	<p>See guidelines and schematics on following pages.</p> <table border="0"> <tr> <td>Dome</td> <td>96 ft. to center ceiling; 65 ft. to rim of ceiling</td> </tr> <tr> <td>Low Steel</td> <td>75 ft., 60 ft.</td> </tr> <tr> <td>High Steel</td> <td>96 ft.</td> </tr> <tr> <td>Scoreboard</td> <td>10.8 ft. x 6.5 ft. House center; 39'11" clearance from floor in highest position</td> </tr> </table>	Dome	96 ft. to center ceiling; 65 ft. to rim of ceiling	Low Steel	75 ft., 60 ft.	High Steel	96 ft.	Scoreboard	10.8 ft. x 6.5 ft. House center; 39'11" clearance from floor in highest position								
Dome	96 ft. to center ceiling; 65 ft. to rim of ceiling																
Low Steel	75 ft., 60 ft.																
High Steel	96 ft.																
Scoreboard	10.8 ft. x 6.5 ft. House center; 39'11" clearance from floor in highest position																
Basketball Floor	60 ft. x 112 ft. entire floor																
Stage Type	StageRight ME 500																
(House Sets)	<table border="0"> <tr> <td>Size</td> <td>4,000 sq. ft. maximum 18" to 78" (Two-inch increments)</td> </tr> <tr> <td>Deck Type</td> <td>"Techstage" black fiberglass FRP surface in 4' x 8' sections 50% of unobstructed under deck (STAGERIGHT) Linoleum tile surface on 6' x 8' decks (SICO)</td> </tr> <tr> <td>Stairs</td> <td>Includes reflective treads</td> </tr> <tr> <td>Skirt</td> <td>100 ft. black velour (STAGERIGHT)/black velour (SICO)</td> </tr> <tr> <td>Rail</td> <td>100 ft. at 42"</td> </tr> <tr> <td>Barricade</td> <td>120' ft. (STAGERIGHT) barricade 200 ft. steel crowd control barricade with wire mesh front 100 ft. bicycle barricade</td> </tr> <tr> <td>Curtains</td> <td>Full theatre curtains available including borders, legs, act and rear. 24 ft. tall, 60 ft. wide from fixed batten positions.</td> </tr> </table>	Size	4,000 sq. ft. maximum 18" to 78" (Two-inch increments)	Deck Type	"Techstage" black fiberglass FRP surface in 4' x 8' sections 50% of unobstructed under deck (STAGERIGHT) Linoleum tile surface on 6' x 8' decks (SICO)	Stairs	Includes reflective treads	Skirt	100 ft. black velour (STAGERIGHT)/black velour (SICO)	Rail	100 ft. at 42"	Barricade	120' ft. (STAGERIGHT) barricade 200 ft. steel crowd control barricade with wire mesh front 100 ft. bicycle barricade	Curtains	Full theatre curtains available including borders, legs, act and rear. 24 ft. tall, 60 ft. wide from fixed batten positions.		
Size	4,000 sq. ft. maximum 18" to 78" (Two-inch increments)																
Deck Type	"Techstage" black fiberglass FRP surface in 4' x 8' sections 50% of unobstructed under deck (STAGERIGHT) Linoleum tile surface on 6' x 8' decks (SICO)																
Stairs	Includes reflective treads																
Skirt	100 ft. black velour (STAGERIGHT)/black velour (SICO)																
Rail	100 ft. at 42"																
Barricade	120' ft. (STAGERIGHT) barricade 200 ft. steel crowd control barricade with wire mesh front 100 ft. bicycle barricade																
Curtains	Full theatre curtains available including borders, legs, act and rear. 24 ft. tall, 60 ft. wide from fixed batten positions.																
Intercom	Clear Com Cue System																
Power (See diagram)	200 & 400 AMP 3PHZ 208V STAGE RIGHT/LEFT 90 ft.& 160 ft. from upstage center																

House Lights	Location	Sound booth or portable sound
	Type	Dimmable LED stadium lights (125 foot candles on floor)
	Control	House electrician
	Message	Two lighted message centers in the arena proper run upcoming events, public service and paid advertising. These are operated before performances and at intermissions. The boards are turned off five minutes prior to performance.
3 Forklifts		6000 lb. capacity, side shifts, 4 ft. tines (extensions available) 8 ft. down height, 18 ft. up height; Propane fuel
9 Dressing Rooms (See diagram)	Team Rooms 1-4	570 sq. ft., 50 ft. from stage, bath and team shower
	Dressing Rooms 1-4	120 sq. ft., 50' from stage, bath w/private shower
	Green Room	400 sq. ft. private bath w/shower
	Furniture	House owns convention-type furnishings: rentals available
	Plants	Rental
	Phones	By House
Production Office		400 sq. ft., 50' from stages
	Phones	By House
Video		Professional production available on site by Token Creek. 608-849-4965
Catering/ Concessions	Company	Centerplate
	Contact	608-661-0525
Hotels		Clarion Suites – 608-284-1234, (Attached to Exhibition Hall) Comfort Inn Madison Downtown – 608-255-7400, 722 John Nolen Dr., 53713 Sheraton Madison Hotel – 608-251-2300, 706 John Nolen Dr., 53713 Holiday Inn Express & Suites – 608-709-5050, 610 John Nolen Dr., 53713 Home2 Suites – 608-949-9650, 2153 Rimrock Rd., 53713 (For additional hotels, please see list included with this guide.)
House Personnel	Electrician	House
	HVAC	House
	IATSE	608-848-9084
	Parking	House
	Usher Staff	House
	Box Office	Madison Ticket Agency 608-267-3995
Security	Fire	(608) 266-4420 (City of Madison - Fire)
	Inside & Traffic	Contact House (County Sheriff's Dept.)
	Outside	Contact House (Town of Madison-Police 210-7262)
	Private (T-Shirt)	CSC
Security Breakdown	Report	1/2 hour prior to doors
	Contact	House

- Safety** At no time will the House allow any violation of federal, state or local regulations concerning public safety. This shall include but not be limited to rigging, pyrotechnics, aisles and exits, ventilation and air quality, and proper light levels.
- Smoking** All buildings are smoke free (including all electronic and vaping devices) by Dane County Ordinance. This ordinance carries a fine per violation.
- Pyrotechnics** Permit required from Town of Madison Fire Department. (See sample form.) Please consult your service representative for further details.
- Exterior Signage** No signs, banners or messages of any kind may be directed to traffic on John Nolen Drive, Rimrock Road or Olin Ave.
- Curfew** Per county ordinance, minors are not allowed on the streets during certain hours unless accompanied by a parent, legal guardian, or an adult with permission of a parent or legal guardian.
- | | | |
|---------------|-------------------------|-------------------------|
| Under age 15 | Sunday through Thursday | 10:00 p.m. to 5:00 a.m. |
| | Friday and Saturday | 11:00 p.m. to 5:00 a.m. |
| 15 through 17 | Sunday through Thursday | 11:00 p.m. to 5:00 a.m. |
| | Friday and Saturday | Midnight to 5:00 a.m. |

The Alliant Energy Center

RIGGING GUIDELINES FOR THE COLISEUM

A. General Rules (which apply in all cases)

1. All rigging plots must be submitted for prior approval by the Alliant Energy Center Director of Operations no less than four weeks prior to the performance date. The Alliant Energy Center reserves the right to determine proper load point distribution and location on the roof support system.
2. All hanging loads shall be attached to the radial rib members within three feet of an intersection with a circumferential ring member.
3. In no case shall hanging loads be attached to circumferential ring members, cat walks or light racks.
4. In no case shall the total of all loads attached to a radial rib member within three feet of an intersecting circumferential ring member exceed 4,000 lbs.

B. Center Stage Rules

1. If the loading is essential symmetrical and distributed within the shaded area shown on sheet SK-14 attached, the total permissible rigging load is 150,000 lbs.
2. If the loading is distributed within any half circle of the shaded area shown on SK-14, the total permissible rigging load is 100,000 lbs.

C. North Stage Rules

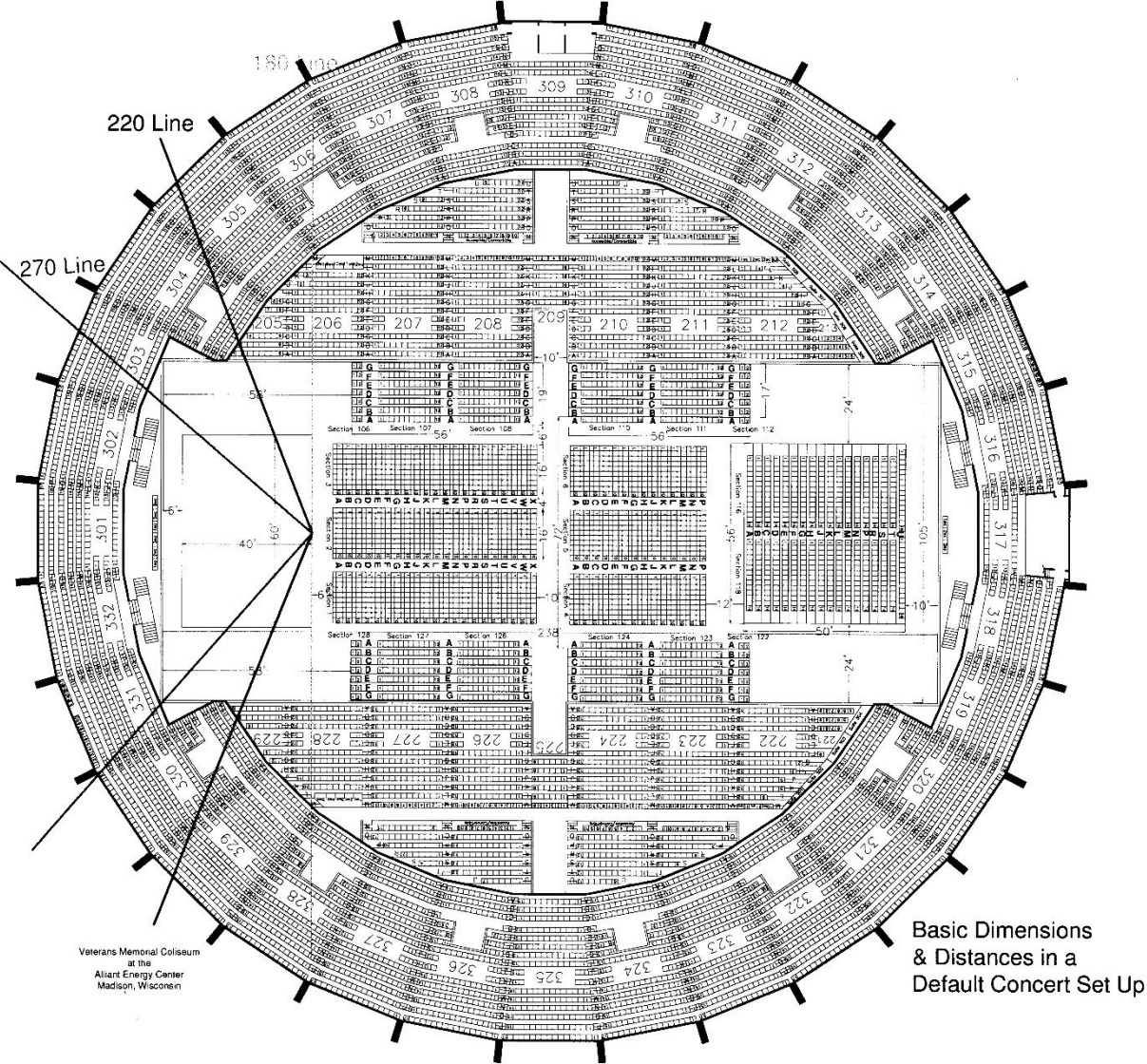
1. If the loading is distributed to up to 20 locations within the shaded area shown on sheet SK-8 attached, the total permissible rigging load is 53,000 lbs.
2. If the loading is distributed to between 21 & 27 locations within the shaded area shown on sheet SK-8, the total permissible rigging load is 62,000 lbs.
3. If the loading is distributed to 28 or more locations within the shaded area shown on SK-8, the total permissible rigging load is 80,000 lbs.
4. The total permissible load within the shaded area shown on SK-8 shall not exceed 80,000 lbs. in any case.

D. Combined Center Stage & North Stage Rules

When rigging loads are present in both areas, the combined percentages of actual to allowable loading in both areas shall not exceed 100%. For example, if the North Stage area is loaded to 75% of its limit set above in Section C, the Center Stage area may be loaded to 25% of its limited set above in Section B.

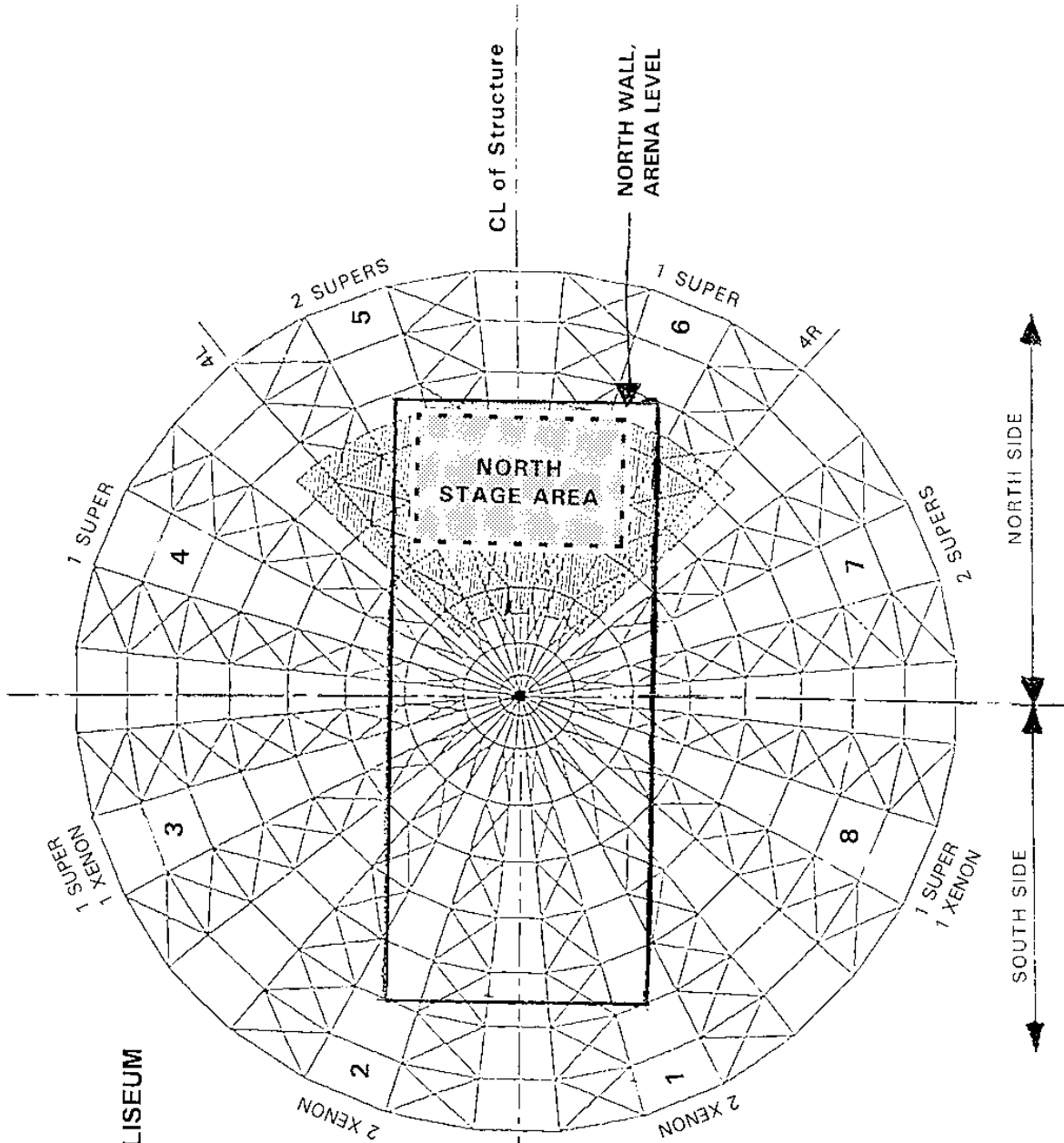
Prepared by: Computerized Structural Design, Inc. 11/2/92

Veterans Memorial Coliseum



Veterans Memorial Coliseum
at the
Alliant Energy Center
Madison, Wisconsin

Basic Dimensions
& Distances in a
Default Concert Set Up

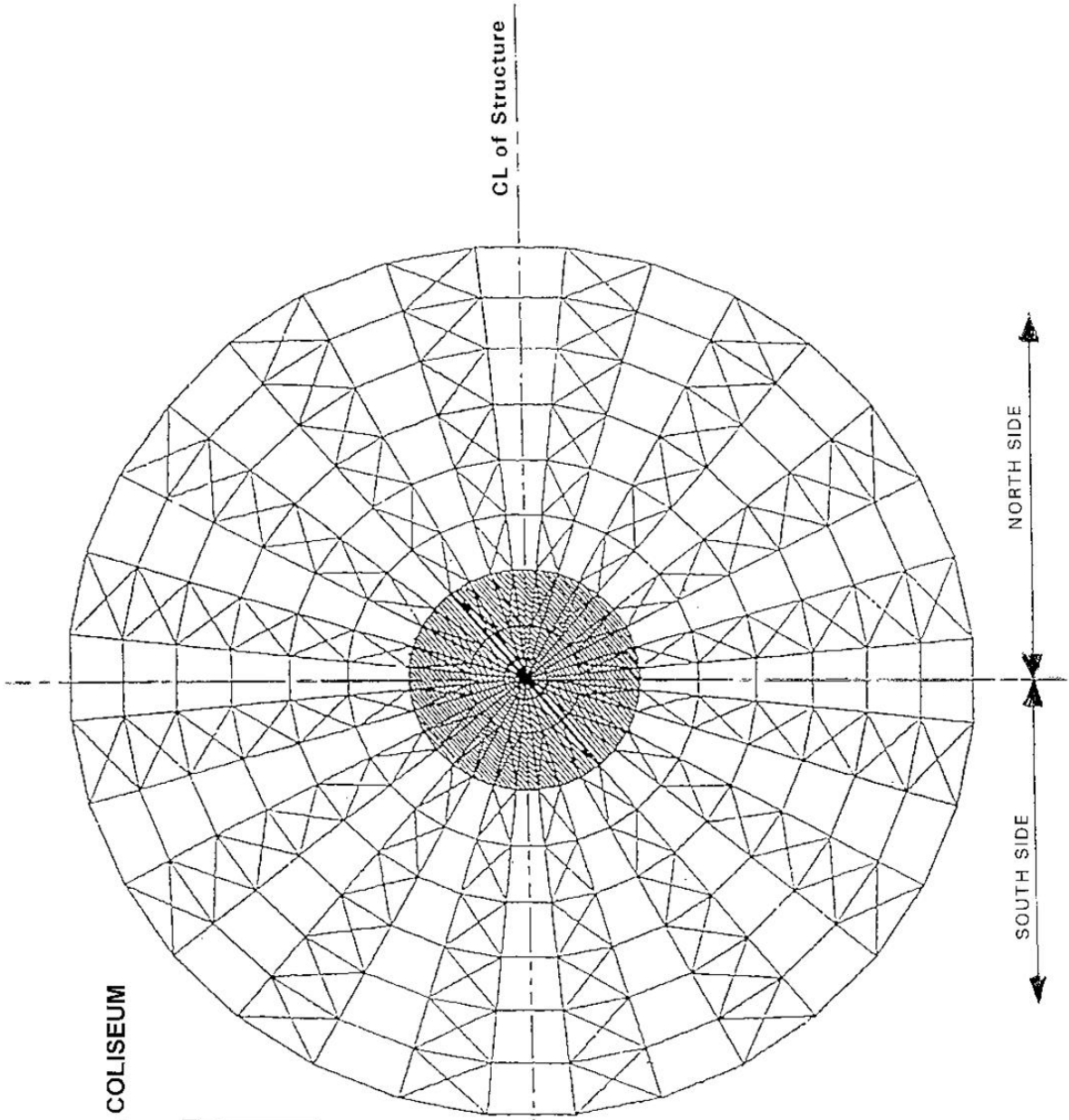


VETERANS MEMORIAL COLISEUM

SK-8
 NORTH STAGE 8-RIB AREA
 AND
 SPOTLIGHT PATTERNS

VETERANS MEMORIAL COLISEUM

SK-14
CENTRAL STAGE
LOADING AREA

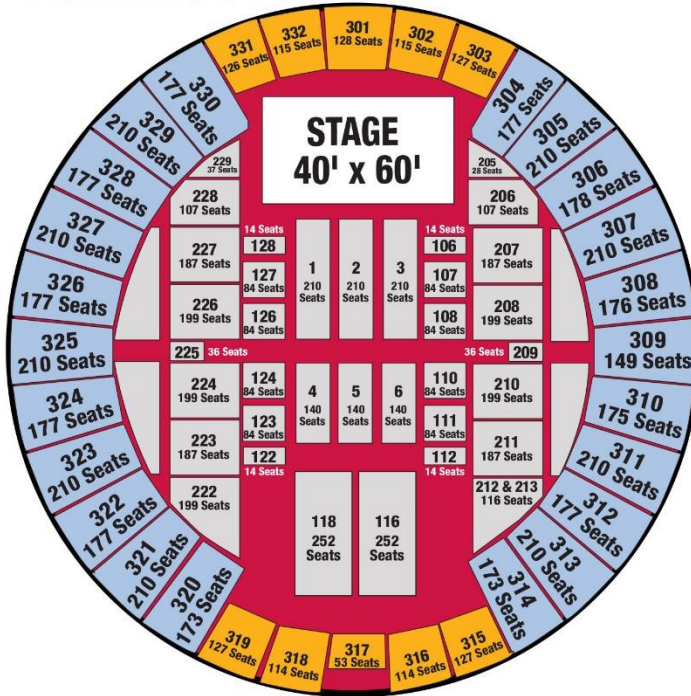


VETERANS MEMORIAL COLISEUM

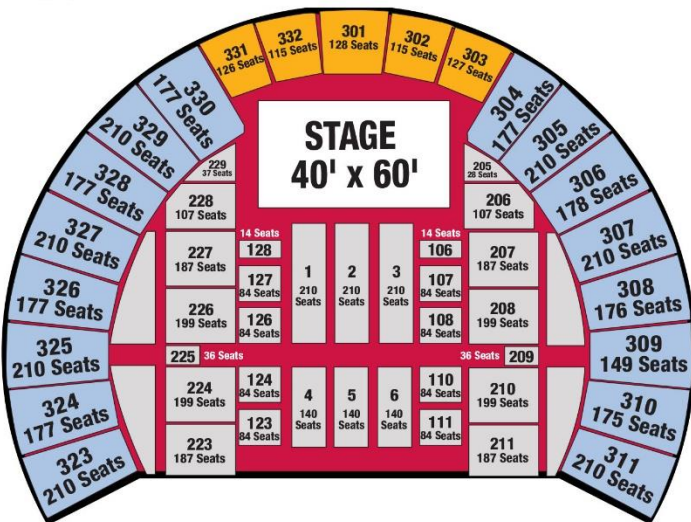
AT THE ALLIANT ENERGY CENTER



FULL HOUSE



3/4 HOUSE



Facility Specifications

CAPACITY <i>*subject to change</i>	
10,230	General Admission
8,844	Reserved (unobstructed) End Stage
9,887	In The Round
9,455	Basketball
7,890	Hockey
7,672	3/4 House Reduction General Admission
5,500	3/4 House Reduction Reserved
4,267	With Black Out Curtain (□ seats eliminated)
3,121	With Black Out Curtain & additional seats eliminated (□ & □ seats eliminated)

RIGGING	
Dome	96 ft. to center ceiling; 65 ft. to rim of ceiling
Low Steel	75 ft.
High Steel	96 ft.
LED Video Scorebd	10.8 ft. x 6.5 ft. House center; 39 ft. 11" clearance from floor in highest position

STAGE TYPE	
House sets	Stage Right ME 500

POWER	
200 & 400 AMP	Stage right/left 90 ft. & 160 ft. from upstage center
3PHZ 208V	

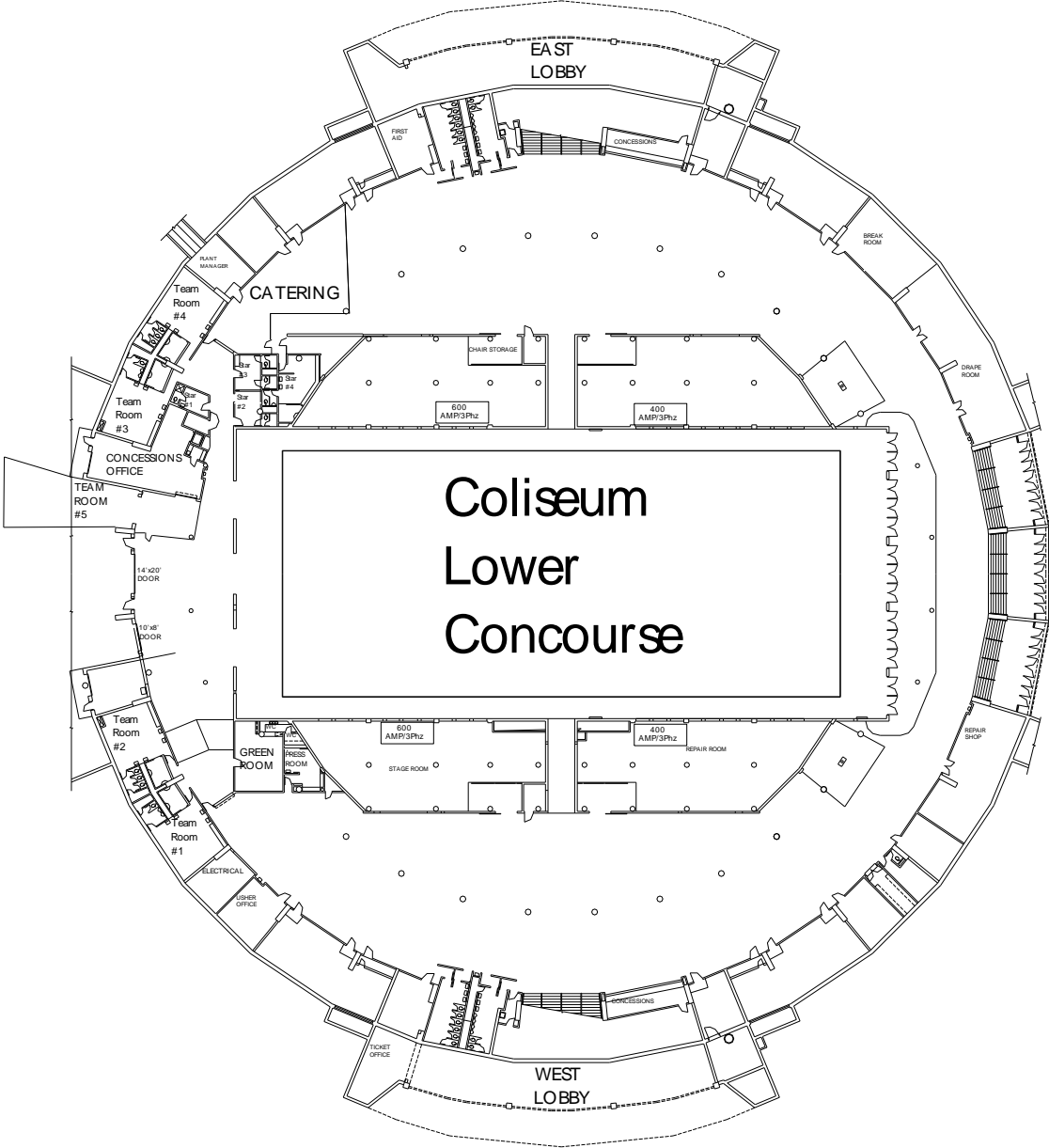
HOUSE LIGHTS	
Location	Soundbooth
Type	Dimmable LED Stadium lights at 125 ft. (and place on floor)
Control	House electrician
Message	Two lighted message centers in the arena and paid advertising. These are operated before performances and at intermissions. The boards are turned off five minutes prior to performance.

9 DRESSING ROOMS	
Team Rms 1-4	570 sq. ft. each, 50 ft. from stage, bath and shower
Dressing Rms 1-4	120 sq. ft. each, 50 ft. from stage, bath with private shower
Green Room	400 sq. ft., well-appointed with private shower
Furniture	House owns convention-type furnishings; rentals available
Plants	Rental
Phones	By House

PRODUCTION	
Office	400 sq. ft., 50 ft. from stage
Phones	By House
Video	Professional production available on-site by Token Creek 608-849-4965
Box Office	Madison Ticket Agency 608-267-3995

CONTACT: 608-267-1549 | SALES@ALLIANTENERGYCENTER.COM | ALLIANTENERGYCENTER.COM

Veterans Memorial Coliseum



Venue Information

Exhibition Hall

Building	Exhibit Halls A-D 13 Meeting Rooms Boardroom (furnished conference room)		
Capacity	General Admission Hall D (30,000 GSF)		3,000
	General Admission Halls D & C (50,000 GSF)		4,500
	Reserved Halls D & C		3,436
Door Policy	General Admission	1.5 hours prior to performance	
	Reserved Seats	1 hour prior to performance	
	(Door policy is firm. A change requires written permission from the Director.)		
Parking	Buses within 50 ft. of stage door Truck lot adjacent to load-in entrance		
Rigging	See guidelines and schematics included in this guide.		
	Joists	10' on center	(5' down stage edge area)
	Low Steel	30 ft.	
	High Steel	40 ft.	
	Steel can be accessed from catwalk.		
Stage (House Sets)	Type	STAGERIGHT ME 500	
	Size	4,000 sq. ft. maximum 8" to 78" (2-inch increments)	
	Deck Type	"Techstage" black fiberglass FRP surface in 4' x 8' sections 50% of unobstructed under deck (STAGERIGHT)	
	Stairs	Includes reflective treads	
	Skirt	100 ft. black (STAGERIGHT)	
	Rail	100 ft. at 42"	
	Barricade	120' Stage Right barricade 100 ft. bicycle barricade	
	Curtains	Theatre curtains available including borders, legs, act and rear. 24 ft. tall, 60 ft. wide from fixed batten positions.	
Spotlight Platforms	Location	2 platforms without spotlights (See rigging schematic)	
Power	3 Panels	400 AMP 3PHZ 208V	upstage center
	Shore Power	60 ft. to bus parking	
House Lights	Location	Shop (high bays and work light) (Performance light on the floor)	
	Type	LED dimmable	
	Control	House electrician	
Load In	20' x 20' exterior door, 20' x 18' interior door (Can drive in.)		

3 Forklifts	6000 lb. capacity, side shifts, 4 ft. tines (extensions available) 8 ft. down height, 18 ft. up height Propane fuel
2 Dressing Rooms	(See diagram) Note: No showers are available in this facility. Layout 400 square ft. each. Rough private bath. Furniture House owns convention-type furnishings; rentals available. Hotel Additional space is available in the attached hotel. Plants Rental Phones House
Production Office	Layout 600 sq. ft., 150' from stage Phones House Hall C Ticket booth, 900 sq. ft. (Two rooms at entrance in lobby)
Catering	Company <i>Centerplate</i> Contact 608-661-0525
Background Music	A wide selection is readily available for the Lobby, Atrium and Halls A-D. Special arrangements can be made for background music in the meeting and board rooms as well.
Hotels	Clarion Suites – 608-284-1234, (Attached to Exhibition Hall) Comfort Inn Madison Downtown – 608-255-7400, 722 John Nolen Dr., 53713 Sheraton Madison Hotel – 608-251-2300, 706 John Nolen Dr., 53713 Holiday Inn Express & Suites – 608-709-5050, 610 John Nolen Dr., 53713 Home2 Suites – 608-949-9650, 2153 Rimrock Rd., 53713 (For additional hotels, please see list included in this guide.)
House Personnel	Electrician House HVAC House IATSE 608-848-9084 Parking House Usher Staff House Box Office Madison Ticket Agency 608-267-3995
Security	Fire (608) 266-4420 (City of Madison - Fire) Inside & Traffic Contact House (County Sheriff's Dept.) Outside Contact House (Town of Madison-Police 210-7262) Private (T-Shirt) CSC
Security Breakdown	Report 1/2 hour prior to doors Contact House
Safety	At no time will the House allow any violation of federal, state or local regulations concerning public safety. This shall include but not be limited to rigging, pyrotechnics, aisles and exits, ventilation and air quality, and proper light levels.
Smoking	<u>All buildings are smoke free (including all electronic and vaping devices) by Dane County Ordinance. This ordinance carries a fine per violation.</u>

Pyrotechnics Permit required from Town of Madison Fire Department. (See sample form.) Please consult your service representative for further details.

Exterior Signage No signs or banners may be directed to traffic on John Nolen Drive, Rimrock Road, or Olin Ave.

Curfew Per county ordinance, minors are not allowed on the streets during certain hours unless accompanied by a parent, legal guardian, or an adult with permission of a parent or legal guardian.

Under age 15	Sunday through Thursday	10:00 p.m. to 5:00 a.m.
	Friday and Saturday	11:00 p.m. to 5:00 a.m.

15 through 17	Sunday through Thursday	11:00 p.m. to 5:00 a.m.
	Friday and Saturday	Midnight to 5:00 a.m.

The Alliant Energy Center
RIGGING AND HANGING LOADS
Exhibition Hall

Clear Span Truss System

- 210 ft. long
- 30 ft. floor to bottom of beams, 40 ft. floor to top of beams
- Beam access via catwalk at bottom (See drawing attached.)
- Trusses run parallel to down-stage edge, 10 ft. on center
- From 50-70 out from the back wall, trusses are on 5 ft. centers.
- Trusses (120 SLH) have the capacity to carry 8 PSF of uniformly distributed equipment load or 1200 lb. concentrated equipment loads from any bottom panel point where diagonal web members meet bottom chord members. No concentrated loads shall be suspended between these panel points unless smaller than 400 lbs. and adjacent panel points are not loaded. (See drawing attached.)
- Truss bridging is not designed for live load capability. DO NOT HANG EQUIPMENT FROM BRIDGING.

Cat Walk System

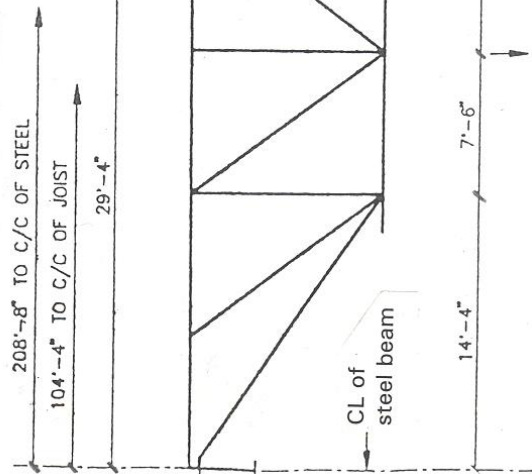
- Is used to access the beams and light platforms.
- Allowable live loads suspended from the catwalk may not exceed 25 PSF.
- Do not suspend additional loads from the catwalk.

PLEASE REFER TO DRAWINGS OF ALLOWABLE TRUSS LOADING AND EQUIPMENT LOADING PLAN FOR EXHIBITION HALL D.

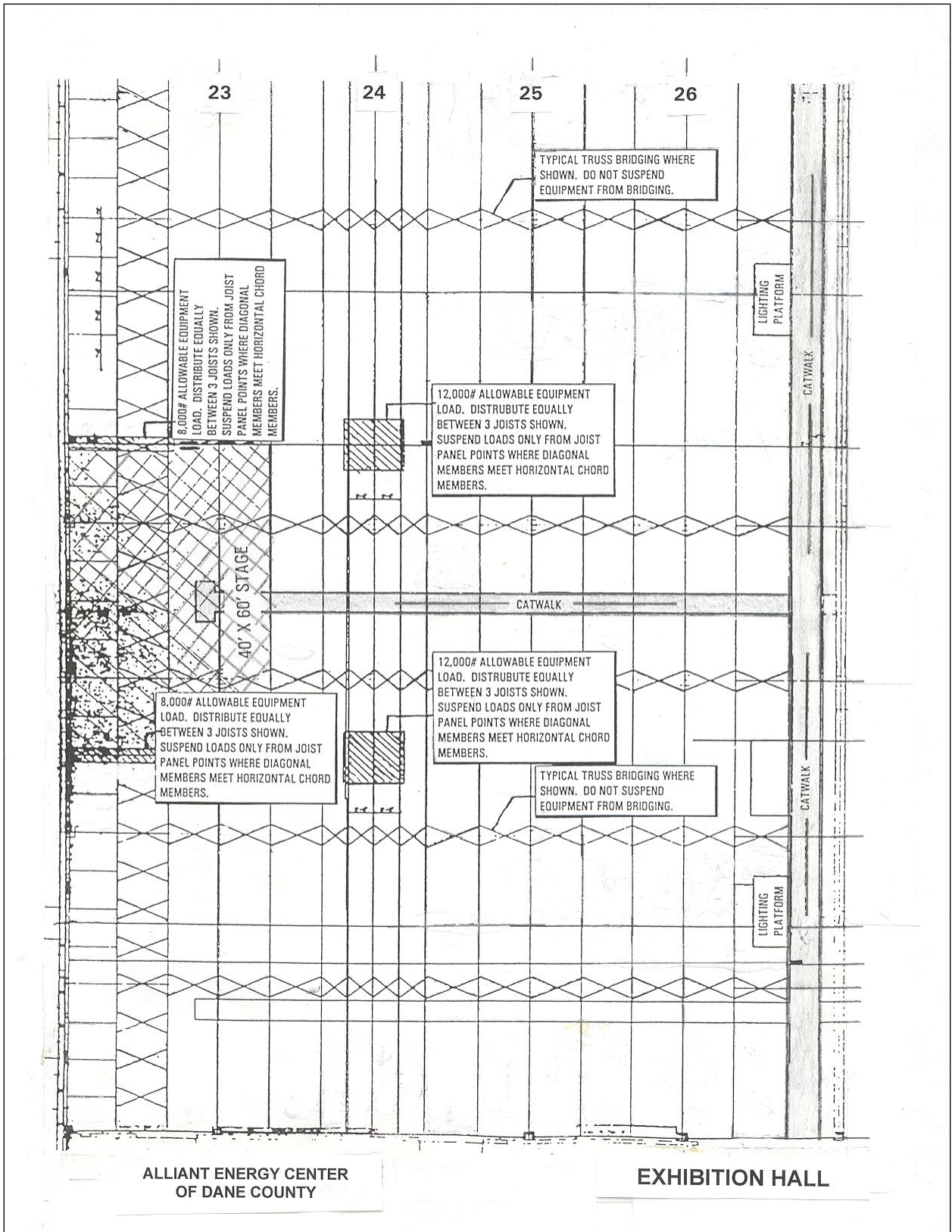
ALLIANT ENERGY CENTER
OF DANE COUNTY

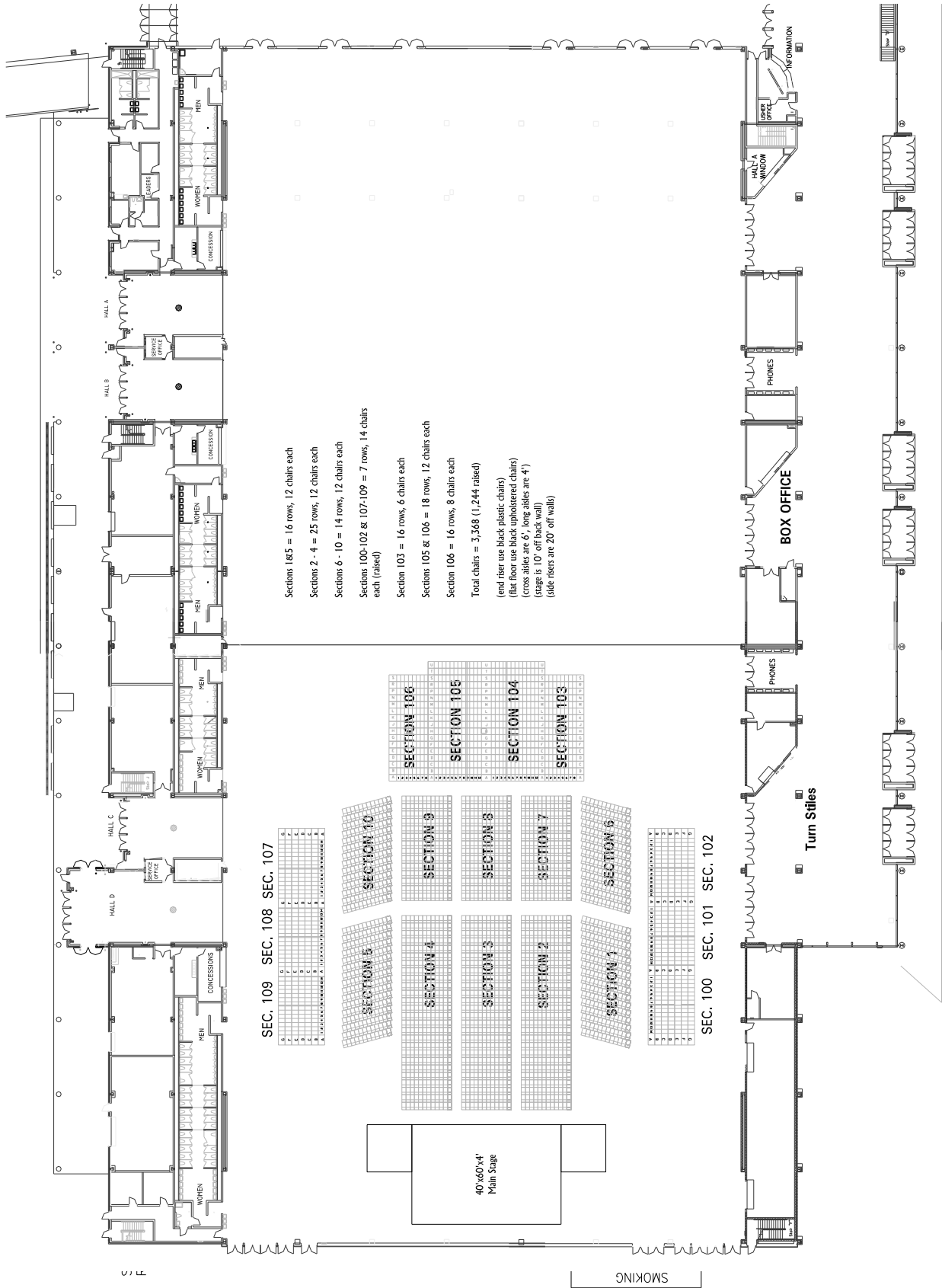
EXHIBITION HALL

Exhibit Hall trusses (120SLH) have the capacity to carry 8 PSF uniformly distributed equipment load or 1200# concentrated equipment loads from any bottom panel point where diagonal web members meet bottom chord members. No concentrated loads shall be suspended between these panel points unless smaller than 400# and adjacent panel points are not loaded.



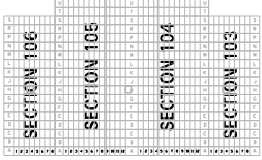
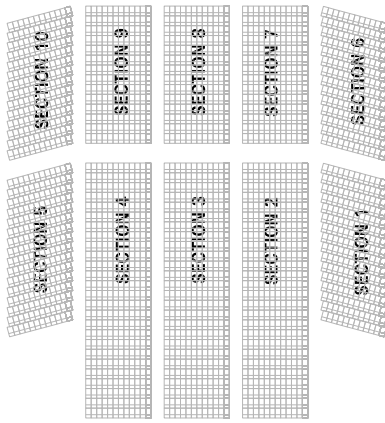
PROFILE OF ALLOWABLE TRUSS PANEL LOADING





SEC. 109 SEC. 108 SEC. 107

A	6
B	6
C	6
D	6
E	6
F	6
G	6



Sections 1&5 = 16 rows, 12 chairs each
 Sections 2 - 4 = 25 rows, 12 chairs each
 Sections 6 - 10 = 14 rows, 12 chairs each
 Sections 100, 102 & 107-109 = 7 rows, 14 chairs each (raised)
 Section 103 = 16 rows, 6 chairs each
 Sections 105 & 106 = 18 rows, 12 chairs each
 Section 106 = 16 rows, 8 chairs each
 Total chairs = 3,368 (1,244 raised)
 (end riser use black plastic chairs)
 (flat floor use black upholstered chairs)
 (cross aisles are 6', long aisles are 4')
 (stage is 10' off back wall)
 (side risers are 20' off walls)

Madison Area Accommodations

(visit www.visitmadison.com for more options)

On-Site

Clarion Suites at Alliant Energy Center
2110 Rimrock Road, Madison, WI 53713
608-284-1234

Adjacent to AEC campus

Holiday Inn Express and Suites Madison-Central
610 John Nolen Drive, Madison, WI 53713
608-709-5050

Home2Suites Madison Central Alliant Energy Center
2153 Rimrock Road, Madison, WI 53713
608-949-9650

Sheraton Madison Hotel
706 John Nolen Drive, Madison, WI 53713
608-251-2300

Comfort Inn
722 John Nolen Drive, Madison, WI 53713
608-255-7400

Within 3 Miles of AEC

AC Hotel Marriott Downtown
One North Webster Street, Madison, WI 53703
608-286-1337

America's Best Value Inn-Mayflower
2509 Perry Street, Madison, WI 53713
608-221-9999

AmericInn Lodge and Suites Madison South
101 W. Broadway, Madison, WI 53716
608-222-8601

Country Inn and Suites
400 River Place, Madison, WI 53716
608-221-0055

Doubletree by Hilton
525 W. Johnson Street, Madison, WI 53703
608-251-5511

The Edgewater
1001 Wisconsin Place, Madison, WI 53703
800-922-5512

Graduate Madison
Langdon Street, Madison, WI 53703
608-257-4391

Hampton Inn and Suites Madison-Downtown
440 West Johnson Street, Madison, WI
608-255-0360

Hilton Madison
6 East Wilson Street, Madison, WI 53703
608-255-6100

Hyatt Place Madison-Downtown
333 West Washington, Madison, WI 53703
608-257-2700

The Madison Concourse Hotel & Governor's Club
1 West Dayton Street, Madison, WI 53703
608-257-6000

Park Hotel
22 S. Carroll Street, Madison, WI 53703
608-257-8811

Super 8 Motel
602 W. Beltline Hwy, Madison WI 53713
608-258-8889

Within 5 Miles of AEC

Best Western Plus InnTowner
2424 University Avenue, Madison, WI 53726
608-233-8778

Days Inn
4402 East Broadway Service Road, Madison, WI 53716
608-620-0107

Hawthorn Suites
5421 Caddis Bend, Fitchburg, WI 53711
608-271-3400

HotelRED
1501 Monroe Street, Madison, WI 53711
608-819-8228

Sleep Inn and Suites
4802 Tradewinds Parkway, Madison, WI 53718
608-221-8100

Wyndham Garden
2969 Cahill Main, Fitchburg, WI 53711
608-274-7200

Fireworks Shooter Permit Application

- A Fireworks Event Permit Application is also required
(See exception under Permit Conditions on Page 2)



Submit Application to:

Madison Fire Department
314 W. Dayton St
Madison, Wisconsin 53703-2579
(608) 266-4484

Make checks payable to: City of Madison Treasurer.
Permit fee is \$250.00 and is non-refundable.

For questions, or to contact a fire inspector, call Madison Fire at (608) 266-4484 for assistance with completing this application.

**Complete sections A - D. It is mandatory that all applicable information be completed.
Inaccurate information may result in suspension or revocation of permit.**

SECTION A: Event Site Information

Street Address: _____
City, State, ZIP: _____
Site name (if applicable): _____
Owner's name: _____

SECTION B: Applicant/Contact Information

Trade name (Doing Business As): _____
Local Contact Person: _____
Local Contact Phone: _____ Local Contact E-mail: _____

SECTION C: Permit Holder Information

Organization Legal Name/Sole Proprietor Name : _____
Mailing Address: _____
City, State, ZIP: _____
Organization Contact Person: _____
Organization Contact Phone: _____ Organization Contact E-mail: _____

SECTION D: Attestation and Signature

By signing this application you acknowledge and agree to comply with Madison General Ordinance 34, Wisconsin Administrative Codes and the International Fire Code.

The statements made in this application are true to the best of my knowledge.

Signature _____ Date _____

Please read and complete the other side -->

Date / Time of Event (no fireworks after 11:00pm or before 8:00am)

Date of event: _____ Rain date (if needed): _____ Time of event: _____

Event Site Information

- Does event have an approved MFD Fireworks Event Permit? YES NO
If NO, this application may not be acted upon until the event has an approved permit to occur. The only exception to this is for Pyrotechnic Special Effects Before a Proximate Audience.

General Requirements

- All permit applications shall be submitted thirty (30) days prior to commencing the prescribed activities.
- A separate application, fee, and license shall be required for each event.
 - Excepting multiple identical shows at a single venue
- Application can be made at the Madison Fire Department, 314 W. Dayton St., Madison, WI 53703.
- Permit is not transferable.
- Inspection(s) may be required before the issuance of this permit.
- Applications shall be acted upon within fifteen (15) business days.
- Permit approval letters shall be producible upon request.

Required Documentation for Permit

- Certificate of Insurance naming the City of Madison as an additional insured. The certificate must indemnify the City. The minimum amount of liability insurance shall be \$1,000,000.
- A general summary of the proposed public display.
- An overall site plan indicating the locations of spectators, the firing site, the fallout perimeter, and any other special conditions.
- Full resume of the applicants experience in conducting public display of fireworks.
- Copies of all ATF and /or DOT licenses required for transport and handling of fireworks.
- Complete fireworks list including size of shell and placement.
- Written permission from the property owner, approved Street Use permit, or explanation why neither are necessary.
- License fee of \$250.00 payable to the City of Madison.

Permit Conditions

- The fireworks event and public display shall comply with MGO 34.5608, IFC Section 5608 and NFPA 160, 1123 or 1126 and with any other applicable codes and standards. Compliance with all applicable codes and standards are the responsibility of the permittee.
- An approved MFD Fireworks Event Permit is required to issue this permit.
 - An Event Permit is not required for Pyrotechnic Special Effects Before a Proximate Audience shows. This type of shoot is generally indoors (examples include the Kohl Center or Overture Center).
- A Fireworks Shooter Permit is required to be submitted to MFD at least 30 days prior to the display date.
- This permit authorizes the permittee to possess or use fireworks approved by the USDOT.
- Fireworks shall not be fired before 8:00 AM or after 11:00 PM, unless approved by the Chief.
- Plastic shell casings are prohibited, unless authorized by the Chief.
- All mortars shall be covered to prevent entry of rain and debris, and to indicate the mortar has fired.
- Manually ignited displays are prohibited.
- Event safety and setback requirements shall meet or exceed NFPA standards, as well as MGO 34.5608(6)(c)(8).
- Unfired fireworks shall be disposed of in accordance with NFPA standards.
- Event conditions shall be provided to MFD as specified in MGO 34.5608(6)(c)(10).
- The permittee shall be responsible for immediately cancelling or terminating any public display in the interest of public safety.
- MFD may require special conditions depending on submittal, location, or type of display.
- If the permittee uses or displays fireworks contrary to the permit conditions, the permit shall be revoked and the permittee may not apply for a new permit for a minimum of 15 months.

Updated 03/2019

The City of Madison Fire Department's pyrotechnic form is also available at:
cityofmadison.com/fire/documents/Fireworks%20Shooter%20Permit_2019.pdf